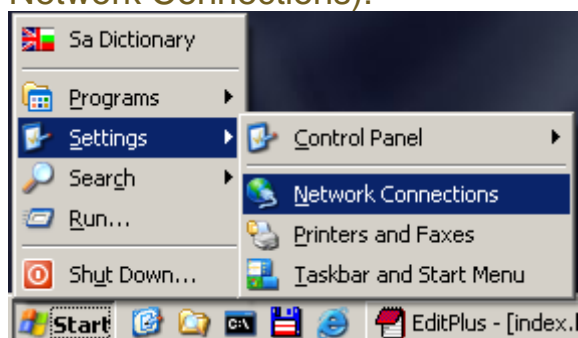
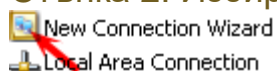


PPPoE настройки за WinXP

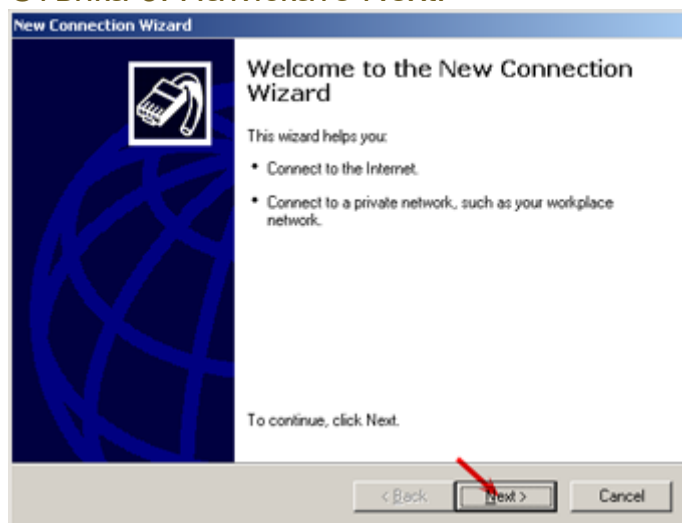
Стъпка 1. Натискате Start и избирате Network Connections (Алтернативно натискате старт, избирате Control Panel, и след това Network Connections):



Стъпка 2. Избирате "New Connection Wizard":



Стъпка 3. Натискате Next:



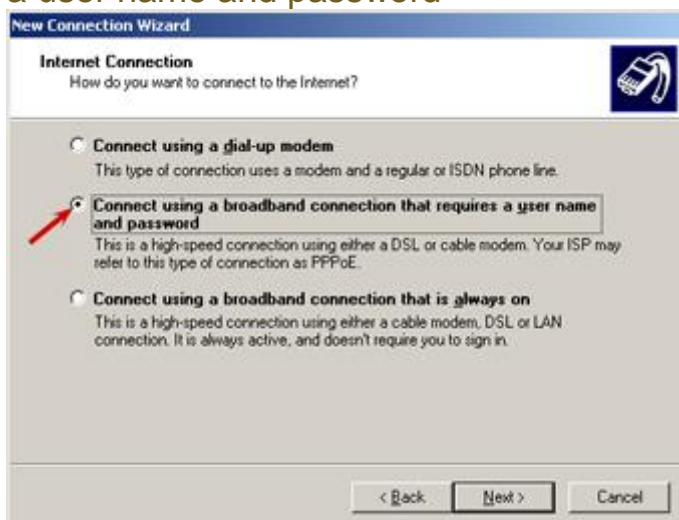
Стъпка 4. Избирате "Connect to the Internet":



Стъпка 5. Избирате "Set up my connection manually":



Стъпка 6. Избирате "Connect using a broadband connection that requires a user name and password"



Стъпка 7. Въвеждате име на връзката

New Connection Wizard

Connection Name
What is the name of the service that provides your Internet connection?

Type the name of your ISP in the following box.

ISP Name

Интернет

The name you type here will be the name of the connection you are creating.

< Back Next > Cancel

Стъпка 8. Натискате Next

New Connection Wizard

Connection Availability
You can make the new connection available to any user or only to yourself.

A connection that is created for your use only is saved in your user account and is not available unless you are logged on.

Create this connection for:

Anyone's use

My use only

< Back Next > Cancel

Стъпка 9. Въвеждате името и паролата си два пъти

New Connection Wizard

Internet Account Information
You will need an account name and password to sign in to your Internet account.

Type an ISP account name and password, then write down this information and store it in a safe place. (If you have forgotten an existing account name or password, contact your ISP.)

User name: user

Password: ●●●●

Confirm password: ●●●●

Use this account name and password when anyone connects to the Internet from this computer

Make this the default Internet connection

Turn on Internet Connection Firewall for this connection

< Back Next > Cancel

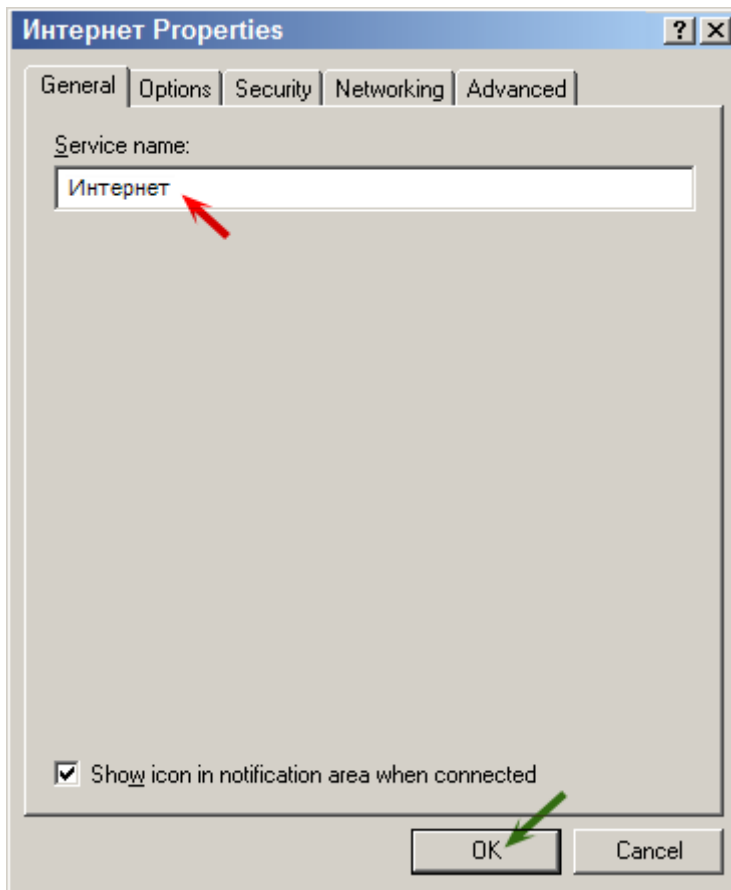
Стъпка 10. Маркирате "Add a shortcut to this connection to my desktop", за да Ви се създаде икона за връзката и натискате Finish



Стъпка 11. Натискате Properties



Стъпка 12. Под "Service name" въвеждате имете на вашата PPOE услуга*



Стъпка 13. Натискате Connect:



Трябва да видите следното балонче долу в дясно:

